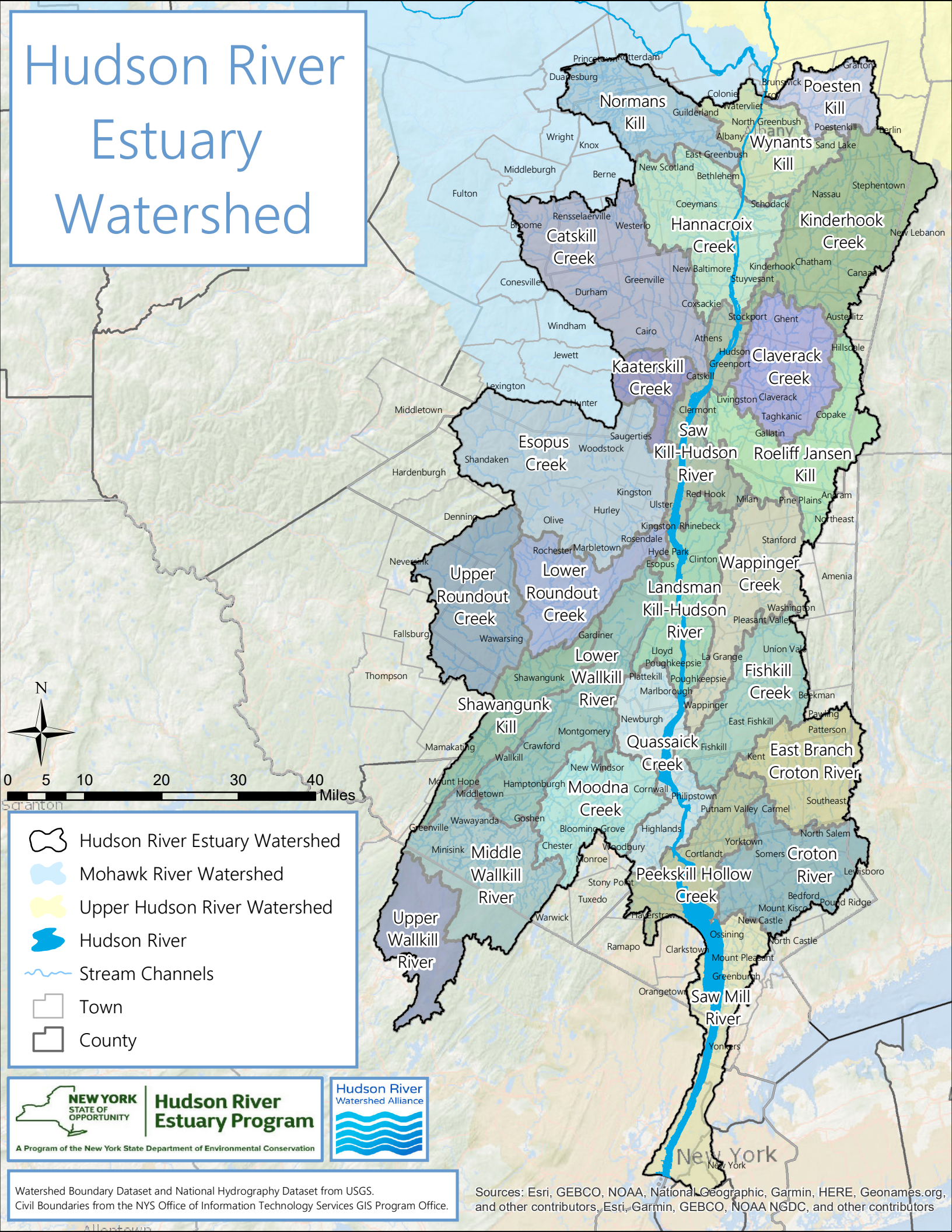









Hudson River Estuary Watershed



-  Hudson River Estuary Watershed
-  Mohawk River Watershed
-  Upper Hudson River Watershed
-  Hudson River
-  Stream Channels
-  Town
-  County



Watershed Boundary Dataset and National Hydrography Dataset from USGS. Civil Boundaries from the NYS Office of Information Technology Services GIS Program Office.

Sources: Esri, GEBCO, NOAA, National Geographic, Garmin, HERE, Geonames.org, and other contributors, Esri, Garmin, GEBCO, NOAA NGDC, and other contributors